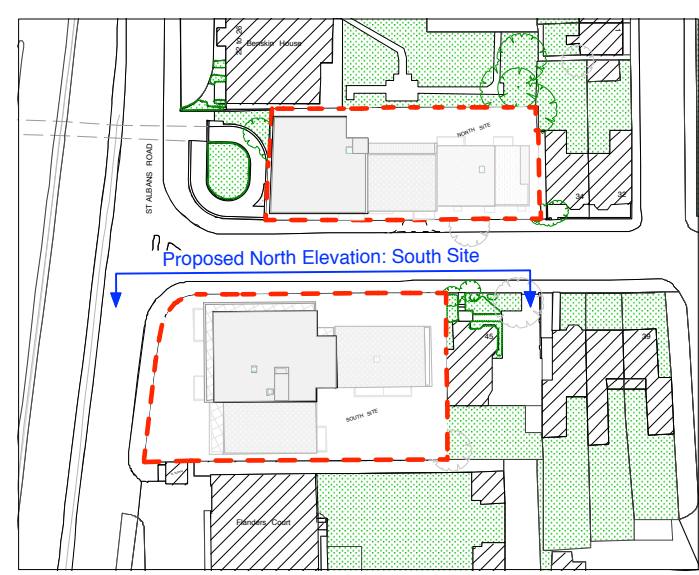


Proposed North Elevation: South Site (St Johns Road)



key plan
1:1250

- Materials:**
1. multi yellow stock brick or similar to be approved.
 2. pale grey brick
 3. double glazed velfac aluminium and timber composite window frames set deep within the reveals
 4. metal railing with type A mesh panels
 5. metal railing with type B mesh panels
 6. winter balcony
 7. Trespa cladding panel or similar to be approved.
 8. solar shading

general notes

Do not scale from these drawings; these drawings are for planning purposes only. KKM Architects take no responsibility for any construction drawings produced from these drawings. This drawing and design is the copyright of KKM Architects and is not to be used for any purpose without their consent. This drawing to be read in conjunction with all Consultants information.

scale 1:200

project

16 – 18 St Albans Road & former Kingham Memorial Hall Car Park, St Johns Road, Watford

for
St Albans Road Limited

drawing title

Proposed North Elevation: South Site (St Johns Road)

revision	date	notes			
A	23/11/17	winter balconies on 2nd&3rd floors indicated.			
Planning					
status	scale	date	drawn by	drawing no.	rev.
	1:200 @A3	Apr 17	JW	216012/PA/132	A

81 Maygrove Road, London, NW6 2EG

Telephone 020 7328 8122
Fax 020 7328 9849
E-mail info@kkmarchitects.com